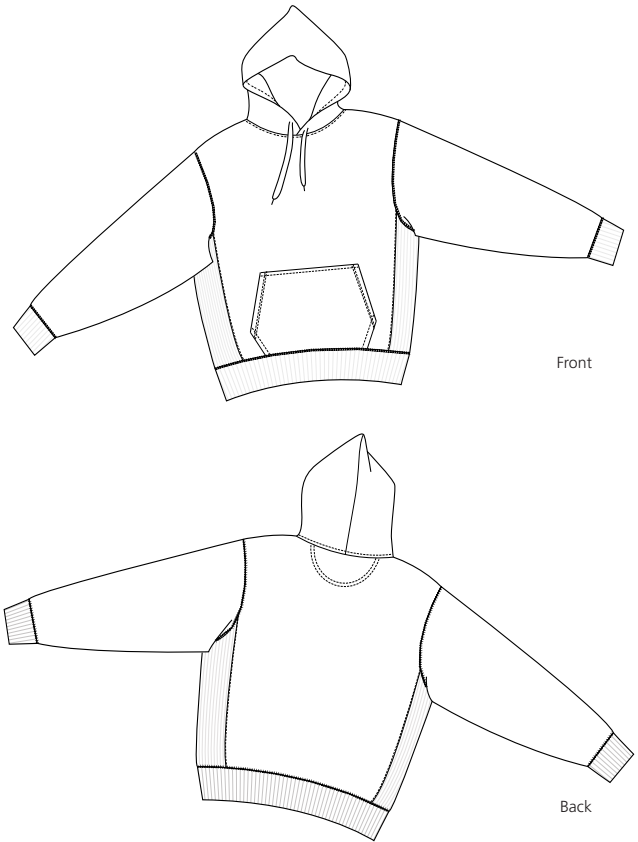


# Super Heavyweight Pullover Hooded Sweatshirt

**Sport-Tek**  
By Port Authority®



## F281

- \* 12-ounce, 80/20 ring spun combed cotton/polyester
- \* Rib knit side gussets
- \* Contrast twill tape in neck seam
- \* 2 x 2 Rib knit cuffs and waistband with spandex
- \* 2-ply hood with dyed-to-match lining and drawstring
- \* Front pouch pocket

**Care Instructions:**  
Machine wash cold. Wash with like colors.  
Do not bleach. Tumble dry low.  
Warm iron if necessary.

Finished Measurements in Inches								
Size	XS	S	M	L	XL	2XL	3XL	4XL
Width	19	21	23	25	27	29	31	33
Length	27.5	28.5	29.5	30.5	31.5	32.5	33.5	34.5
Sleeve CB	33	35	36	37	38	39	40	41
Neck	10	10.25	10.5	10.75	11	11.5	11.75	12

Chest width measured 1" below arm hole. Body length measured from high point shoulder seam to hem.  
Sleeve length measured from center back to hem. Neck width measured from seam to seam.

Colors	
	Brown
	Athletic Heather
	Black
	Navy
	Red
	Royal

**Please Note:**  
Colors shown are approximate and for reference only. For closest match see PMS colors, or for exact match, returnable samples and grommited samples are available.

Shirt Colors	Brown	Athletic Heather	Black	Navy	Red	Royal
Textile PMS	19-1213 TC	14-3803 TC	19-4203TC	19-4010TC	18-1661 TC	19-3950 TC
General PMS	7519 C	435 C	Process Black	532 C	193 C	534 C