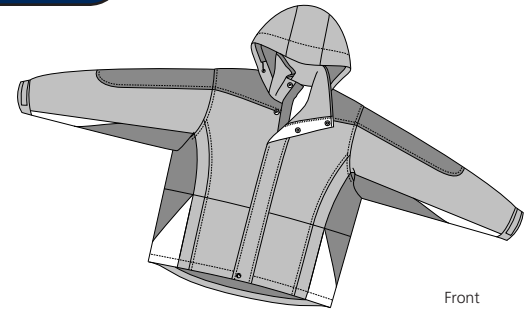
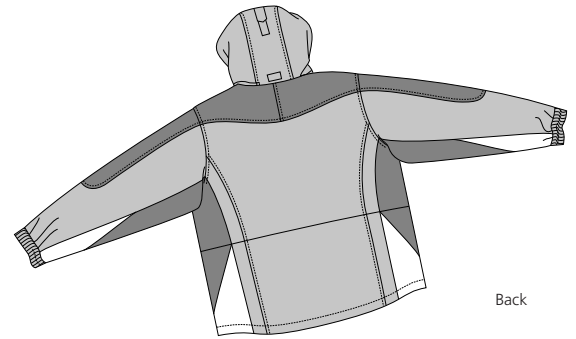


# Anacortes Jacket

PORT AUTHORITY®



Front



Back

## J793

- \* 100% Polyester shell with 5000MM waterproof rating \* 100% polyester fleece lining
- \* 3000G/M2 breathability rating \* 2 zip front pockets \* 1 zip pocket under storm flap
- \* Hidden fold-away hood \* adjustable elastic sleeve cuffs with Velcro
- \* Port Pocket™ engineering for easy decoration

### Care Instructions:

Machine wash cold. Use mild detergent.  
Tumble dry low heat. Remove promptly.  
Do not bleach. Do not dry clean.  
Cool iron if necessary

### Finished Measurements in Inches

Size	XS	S	M	L	XL	2XL	3XL	4XL
Length	28.5	29	29.5	30.5	31.5	32.5	33	33.5
Chest	44	48	51	54	57	60	63	66
Sleeve	34	35	36	37	38	39	39.5	40
Collar Ht	4	4	4	4	4	4	4	4
Chest Pkt	7	7	7.5	7.5	7.5	8	8	8
Areas for Decoration	Left Chest / Right Chest / Full Back			Port Pocket™				

Collar measured center back seam to top hem, Chest width 1" below arm hole, Side pocket from top to bottom of opening, Body length from back neck seam to hem, Sleeve length from center back seam to hem

### Colors

	Terracotta/Dark Red/Sand
	Bayou Blue/Navy/Silver
	Tank Green/Dark Green/Stone
	Black/Graphite/Silver

### Please Note:

Colors shown are approximate and for reference only. For closest match see PMS colors, or for exact match, returnable samples and grommated samples are available.

### Color Chart

Jacket Colors	Terracotta	Bayou Blue	Tank Green	Black
Textile PMS	18-1531 TC	18-3910 TC	17-0625 TC	19-0000 TC
General PMS	704 C	431 C	7497 C	440 C
Accent Color 1	Dark Red	Navy	Dark Green	Graphite
Textile PMS	19-1334 TC	15-3909 TC	18-1015 TC	18-3905 TC
General PMS	506 C	536 C	7532 C	437 C
Accent Color 2	Sand	Silver	Stone	
Textile PMS	13-0907 TC	14-4002 TC	13-0401 TC	
General PMS	7534 C	434 C	7528 C	